

## INFORMATION BOOKLET INLIGTINGSBOEKIE

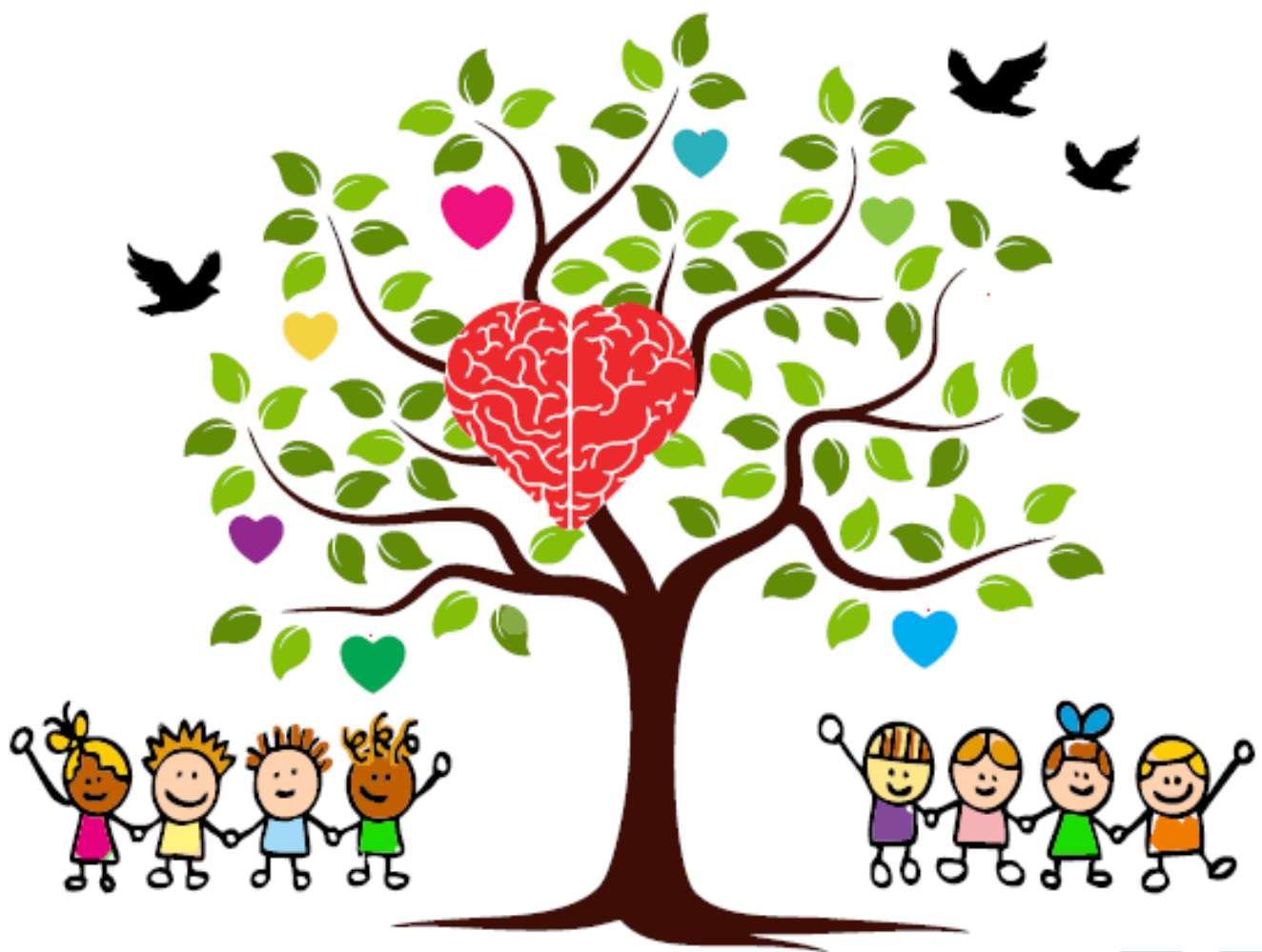
2024

### GROEI WAAR JY GEPLANT IS

Kinders is soos 'n klein saadjie. As jy hom in goeie grond plant, water en sonlig gee, groei hy tot 'n mooi, groot boom.

But the fruit of the Spirit is love, joy, peace, forbearance, kindness, goodness, faithfulness, gentleness and self-control.

**GALATIANS 5:22-23**



# Waalpark

Primêr / Primary



**MNR JANNIE ERASMUS**

WAARNEMENDE SKOOLHOOF/ ACTING PRINCIPAL

# SKOOL SE INFORMASIE/INFORMATION

## CONTACT DETAILS

Telephone: (016) 971 2012

Email: [admin@vaalparkprim.co.za](mailto:admin@vaalparkprim.co.za)

Email: [finansies@vaalparkprim.co.za](mailto:finansies@vaalparkprim.co.za)

### INTERNET BANKING DETAILS

Vaalpark Primary School

Acc. nr: 52 086 1106

Branch code: 632-005

ABSA Sasolburg

Reference: Child's name and surname

No cash to be sent to school

Please install the Karri-app to make payments

28 Baviaanskloof street

Posbus 16

GPS coordinates

Postnet

-26.7641

Vaalpark

27.8413

1948

Waarnemende Skoolhoof	Mnr. J. Erasmus	072 493 8839
Adjunkhoof (Grondslagfase)	Me. C van Dyk	082 385 9659
Adjunkhoof (Intemediêrefase)	Mnr. R. Loots	060 504 2479
Kantoor	Me. C. Thyse	016 971 2012
Finansies	Me. S. Kleynhans	016 971 2012
Bemarking	Me. C. Kriek	0837852585
SA-SAMS /SMSWEB	Me. L. Potgieter	016 971 2012
Boekestoor	Me. C. van Staden	016 971 2012
Sportorganiseerder	Mnr. J van Dijk	0823458347
Terreinbestuurder	Mnr. D. de Jonge	016 971 2012
Musiek	Me. E. Dempers	084 240 5178
Geregistreeerde Berader & Sielkundige	Me. S. Du Toit	082 467 3933
Arbeidsterapeut	Me. S. Du Toit	066 546 2004
Snoepie (slegs WhatsApp)	Me. H. Schoeman	071 281 5002

# KLASINDELING

KLAS	REGISTER ONDERWYSER	GRAADHOOF	DEPARTEMENTSHOOF
GR. 00 A	Me. N. Swanepoel	Me. N. Swanepoel	Me. M. Venter
GR. 00 B	Me. C. Stelfox		
GR. 00 E	Me. D. Viljoen		
GR. 0A1	Me. O. Odendaal	Me. O. Odendaal	
GR. 0A2	Me. T. Kok		
GR. 0A3	Me. M. Nortier		
GR. 0 E1	Me. M. Venter		
GR. 0 E2	Me. B. Gouws		

# SCHOOL HOURS

Grade	Day	School Hours
Gr RR + R	Monday to Friday	07:25 – 13:00
Gr 1, 2 & SPO	Monday to Friday	07:25 – 13:05
Gr 3	Monday to Thursday	07:25 – 13:20
	Friday	07:25 – 13:00
Gr 4 - 7	Monday to Thursday	07:25 – 14:05
	Friday	07:25 – 13:00

- The first day of **every term**, the school starts at 08:00.

## **IMPORTANT GRADE RR & R information**

Dear Parents

**We are looking forward to meeting the little ones. We will do our utmost best to ensure that the learners are HAPPY and safe at all times!**

There are various ways in which we are going to ensure the safety of your child and the educators.

- Grade RR & R learners will make use of the gate by the Grade R classes, in Tafelberg Crescent.
- If they have older brothers/sisters in Vaalpark Primary School, the older siblings will be allowed to accompany the little ones to their class.
- The educator will already be waiting to receive them at the classroom.
- Please make sure that you collect your child directly after school
- Our school hours are **07:25 – 13:00**. The teachers will be at the class from 07:15 in the morning!
- We will all go to the rugby field at **12:55**. Parents can park in the gravel parking lot next to the rugby field. The teacher will wait with the children till Mommy/Daddy comes to fetch them. Please make sure that you collect your child directly after school (13:00)!

**Very important:** We need a copy of your child's birth certificate and clinic card. Please make sure you hand it in on the first day of school

### **Please note the following:**

#### **CLOTHES:**

1. Children come to school in their civvies! (Any comfortable clothes!) If the girls feel like wearing a skirt or dress, please make sure they wear a ski-pants underneath. PLEASE MAKE SURE ALL THEIR CLOTHES AND SHOES ARE MARKED WITH THEIR NAME!
2. Please pack an extra set of clothes (underwear, pants, shirt) and keep it in their bag at all times. This is for if they have an accident or if they spill on their clothes.
3. The boys' hair must be short and neat. No dreadlocks. No patterns are allowed to be shaved into their hair. The girls' hair must also be neat, no coloured hair is allowed and no patterns are allowed to be shaved into their hair.

#### **FOOD:**

1. Please pack a healthy lunch box for school every day. Nutrition is so important for learning! They might struggle to successfully take in all the new knowledge on a tummy full of sweets, chips and fizzy drinks!
2. Please don't send cooldrink or juice to school. Rather send water.
3. If there is any food that your child is not allowed to eat (allergies, religious reasons), please let us know.

**No toys from home are allowed at school!**

## **BELANGRIKE GRAAD RR & R INFORMASIE:**

Liewe Ouers

**Ons is baie opgewonde om al die kleuters te ontmoet. Ons sal ons uiterste bes doen om te verseker dat die leerders te alle tye GELUKKIG en veilig is!**

Daar is verskeie maniere wat ons u kind en die personeel by die skool gaan beveilig:

- Graad RR & R maak gebruik van die hekkie, by die kleuters se klasse, in Tafelbergsingel.
- Indien u kleuter 'n ouer boetie/sussie het wat in Vaalpark Primêr is, is hulle welkom om saam die kleuter by die hekkie in te stap.
- Die onderwyseres sal voor die klas wag om die kleuters te ontvang.
- **Ons skoolure is 07:25 – 13:00.** Die onderwysers sal die oggend vanaf 07:15 by die klas wees!
- Gr R maats word opgelaa by die parkeerarea, by die rugbyveld. Gr RR en naskoolmaats, gaan almal om 12:55 hokkieveld toe. Ouers kan op die veld, oorkant die gimnasium, in Baviaanskloof, parkeer. Die onderwyser sal saam met die kinders wag totdat Mamma /Pappa hulle kom haal. U moet u kind asseblief direk na skool (**13:00**) afhaal!

**Baie belangrik:**

- Ons benodig 'n afskrif van u kind se kliniekkaart vir hul profiele! As u nog nie een gestuur het nie, stuur ASB. 'n afskrif skool toe, op die dag wanneer u kind terugkeer skool toe!

**Let op na die volgende:**

**KLERE:**

1. Kleuters kom in gemaklike speelklere skool toe! As die meisies graag 'n romp of rok dra, moet u sorg dat hulle 'n "ski-pant" daaronder dra. **MERK ASB. DIE KLEUTERS SE KLERE!!**
2. Pak asseblief 'n ekstra stel klere in (onderklere, broek, hemp) en hou dit te alle tye in hul tas. Dit is vir noodgevalle, as hulle 'n glipsie het of as, hulle op hul klere mors.
3. Seuns se hare moet kort en netjies wees. Geen dreadlocks nie. Geen patrone mag in hul hare geskeer word nie.

**KOS:**

1. Pak asseblief elke dag 'n gesonde kosblik vir die skool in. Geen lekkers word toegelaat nie. Gesonde kossies is só belangrik vir leer! Hulle sukkel dalk om al die nuwe kennis suksesvol in te neem op 'n maag vol lekkers, skyfies en gaskoeldrank!
2. Moet asseblief nie koeldrank of sap skool toe stuur nie. Stuur eerder water.
3. Laat weet ons as daar kos is wat u kind nie mag eet nie (allergieë, godsdienstige redes)

**Geen speelgoed word toegelaat nie!**

K43 4E2	K42 5B	K41 4C	K40 5E1 M Swart Grabad,7B	K39 6E2	K38 I 7A	SEUNS
N.BOTHA	DSTOKBROEKX	C.SCHOEMAN	K33 7E2	C.POWELL	R.FRASMUS K31 5C	K27 7B R. LOOTS
K36 5E1	K35 6B D V PLETZEN K.WEÏSE	K34 4E1 G.MARTINS L.DE KLERK	K33 7E2	MJ LOGGENBERG	DOGTERS	K28 6A A.JACOBS
JP V D WESTHUIZEN		R VAN ZYL	K24	C.FOUIRE		
K24 5E2	K23	K22	K21 6C	K24	K16 GR. RE1	K16 GR. RE1 WERKERS
J.VENTER	HAUPTFLESH.	KONFERENSIE	J HAMMAN	SEUNS	DOGTERS	M.VENTER WERKERS
				BOEKSTOOR	J. VAN DIJK	M.VENTER WERKERS
				C.V.STADEN		

K 6 4A	EDJ 5A	K 7 6f1	K 8 7f1
N.DE JAGER	E DE JAGER	D. FIELDS	M. MITROVIC
DOGTERS	K 3 2C	SEUNS	K 2 1E2
	K. MAUL		M. Lotze
			SPO M.V.AARDE
			A. KEYSER

K45 1E1	K46 TERAPEUT	K47	K78 00A
S. V D WALT			N SWANEPOEL
	K 44	K77 3f2	K82 01
	REKENAARSENTRUM	C. DOWLING	O. ODENDAAL
R.O. G THEUNISSEN		K81 0R2	K83 03
		T. KOK	M. NORTIER
		K80 GR.0STOOR + TOILET	
		K76 3A	
		C. BOTHA	
		K75 3E1	
		A. PAXTON	
		K79 0E2	
		B. GOUWS	
		K13 2B	
		J. PETZER	
		R. DU PLESSIS	
		K10 1B	
		T. VAN GRAAN	
		K. Mouton	
		K14 2E2	
		C. VAN DYK	
		K9 1A	
		C. VD WALT	

K85 2A	K84 3C
M. HUMAN	L. VAN DIJK

K70 00E	NUWE KLAS 00B
D. VILJOEN	C. STELFOX

## ONS WAARDES

**LIEFDE** is: OMGEE

Help en beskerm.

**RESPEK** is: WAARDE

Hanteer mense en besittings as waardevol.

**DISSIPLINE** is:

Regte optrede, regte plek, regte tyd, elke keer.

**AANSPREEKLIKHEID** is: ANTWOORDE

Gee antwoorde vir dit wat jy doen.

**BETROUBAARHEID** is: VERTROUE

Doen wat jy gesê het, jy sal.

**LEIERSKAP** is: INVLOED

Staan op vir wat jy glo.

**DIVERSITEIT** is: AANVAAR

Aanvaar mekaar se verskille.

## OUR VALUES

**LOVE** is to: CARE

To do good things for other people.

**RESPECT** is to: VALUE

To treat people and things as valuable.

**DISCIPLINE** is to:

Do the RIGHT THING, at the RIGHT TIME and to do it EVERY TIME.

**ACCOUNTABILITY** is to: ANSWER

Be willing to give answers for your actions.

**DEPENDABILITY** is to be: TRUSTED

To help and protect.

**LEADERSHIP** is to: INFLUENCE

Stand up for what you believe in.

**DIVERSITY** is to: ACCEPT

Accept one's deviances.



## VERKEERSVLOEI

Ons wil 'n ernstige versoek tot die ouers rig om ons te ondersteun met die verkeersvloei in Tafelbergsingel. Dit is van uiterste belang vir ons leerlinge se veiligheid.

Ons kan nie die padreëls verander nie, maar wil 'n beroep op almal doen om asseblief by die ingang vanaf die AGS kerk in te gaan en weer by JCS se kant uit te gaan. Sodoende kan verkeersopeenhoping voorkom word en frustrasievlakke verminder. Ons maak staat op u samewerking in hierdie verband.

- Die hekkie by die Graad RR en R is slegs vir hulle gebruik. Die ander grade en ouers mag nie die hekkie gebruik nie.
- Die Graad 1, 2 en 3 ouers moet op die veldjie oorkant die gimnasium [Baviaanskoof] stop en die leerders moet van die hekkie gebruik maak.
- Die Graad 4 en 5 leerders moet die hekkie op die rugbyveld gebruik en die ouers kan op daardie oop veld stop.
- Die Graad 6 en 7 ouers moet die hekkie by mnr. Venter se klas gebruik met uitkomtyd en moet asseblief nie die hoofhekkie by Ontvangs gebruik nie. Die hekke sal daaglik om 12:00 oopgesluit wees, maar die klein hekkie, wat die naaste aan die Administrasieblok is nie. Die klein hekkie word onmiddellik om 07:30 gesluit, wanneer die oggendklok lui en word elke dag om 13:30 oopgesluit. As 'n kind te laat is vir skool, moet hy / sy die 'Admin' klein hek gebruik. Sodoende kan gereelde laatkommers gemonitor word.

## TRAFFIC FLOW

Our learners' safety is of utmost importance to us, therefore we request that you help us with the traffic flow in Tafelberg Crescent.

We cannot change the traffic rules, but we would appreciate it if you would all come in with the road, at the AGS church, and exit at JCS.

If everybody co-operates it will definitely contribute to the smooth flow of traffic in the mornings and afternoons. We thank you for assisting us to ensure the safety of everyone.

- The small gate at the Grade R and RR classes is only for their use. The other grades and parents may not use it.
- The Grade 1, 2 and 3 parents must also stop in the open area / paving at Baviaanskloof street (opposite gym). Learners must use the gate on the hockey field.
- The Grade 4's and 5's must make use of the gate at the side of the rugby field. Parents must stop in the open field on that side.
- The Grade 6 and 7 parents must also make use of the small gate nearest to Mr. Venter's classroom [near tuck shop] when school comes out. Not the small gate nearest the Admin Block. The small gate will be locked immediately at 7:30, when the morning bell rings, and will be unlocked at 13:30, each day. Should a child be late for school, he/she must use the "Admin" small gate. In this way regular late-comers can be monitored.

## **SELFONE/HORLOSIES**

**GEEN SELFONE/SELFOONHORLOSIES** word by die skool toegelaat nie. Indien 'n leerling 'n selfoon / selfoonhorlosie skool toe bring, moet hy/sy dit by die kantoor inteken, tot aan die einde van die dag.

Om u kind se veiligheid tydens skoolure te verseker, is ons genoodsaak om die volgende in plek te stel:-

Indien u die skool besoek, moet u eerstens by die sekretaresse, me. Thyse, aanmeld. Sy sal u kind oor die interkom roep, indien nodig, of 'n afspraak met die onderwyser maak, op 'n geleë tyd. Andersins sal mnr. Erasmus u te woord staan.

Indien u die skoolterrein om 'n ander rede wil betree, sal me. Thyse vir u 'n besoekerskaartjie gee.

Wanneer u die terrein verlaat, moet u die besoekerskaart terughandig.

**GEEN PERSOON WORD TYDENS SKOOLURE OP DIE TERREIN SONDER 'N BESOEKERSKAART TOEGELAAT NIE.**

## **CELL PHONES/WATCHES**

**NO CELL PHONES / CELL PHONE WATCHES** are allowed at school. Should a child bring one, he/she must hand it in at the office until the end of the day.

To ensure your child's safety during school hours, we enforce the following: -

Should you visit the school, you **MUST** report to the secretary, Mrs Thyse, at the office. If necessary, she will call your child over the intercom, or make an appointment with the relevant teacher you wish to see, at a suitable time.

Otherwise Mr. Erasmus will speak to you.

Should you visit the school for any other reason, Mrs. Thyse will issue you with a visitor's card before you may access the school grounds/building.

When leaving the grounds, you must hand in your visitor's card.

**NO PERSON IS ALLOWED ON THE GROUNDS DURING SCHOOL HOURS, WITHOUT A VISITOR'S CARD**

## STATIONERY/SKRYFBEHOEFTE

# GRAAD RR

### Benodigdhede vir Graad RR:

- ✎ Geboortesertifikaat en Kliniekaart
- ✎ 2 Pakke kryte (9) Triangular Wax kryte
  - ✎ 2 Pakke Uitdraaikryte (12)
    - ✎ 1 Groot bal
    - ✎ 1 Pak tissues (200)
    - ✎ 1 Pak wit papier (50 pak)
- ✎ 50 A4 wit kartonne (Butterfly – 160g)
- ✎ 20 Wit papierborde. (Moet dit asb nie individueel merk nie)
  - ✎ 1 Inkleurboek
  - ✎ 3 Plastiekkoeverte “Carry folders”
  - ✎ 1 Witbordmerkpen
  - ✎ 1 Witborduitveer
- ✎ 24 Stuk Legkaart (Merk elke stukkie individueel asb)
  - ✎ 1 Stoelsakkie
  - ✎ 1 Potloodsakkie vir skêr, pritt en potlode.
  - ✎ 4 Groot buisies Pritt(43 g)
  - ✎ 1 Boontjiesakkie
- ✎ 1 Skêr (Maak asb seker of dit ‘n links/regs-handige skêr is)  
Ons bevel ‘n Maped skêrtjie aan
- ✎ Bring daaglik ‘n toebroodjie en/of vrug.  
(Geen lekkers word toegelaat nie.)

**NB! Merk asseblief al u kind se besittings.**  
(Behalwe die papierborde en die papier)

# GRADE RR

## Requirements for Grade RR:

- ✎ Copy of Birth certificate and Clinic card
- ✎ 2 Packet of Triangle wax crayons (9)
- ✎ 2 Packets of Retractable Wax Crayons (12)
- ✎ 1 Large ball
- ✎ 1 Box of tissues (200)
- ✎ 1 A4 White paper (50 pack)
- ✎ 50 White A4 Butterfly cardboard (160g)
- ✎ 20 White Paper plates (Please don't mark individually)
- ✎ 1 Colouring book(30 page)
- ✎ 3 Carry folders
- ✎ 1 Whiteboard marker
- ✎ 1 Whiteboard eraser
- ✎ 1 Chair bag
- ✎ 24 Piece puzzle (Mark each piece individually)
- ✎ 1 Pencil bag (No Space cases PLEASE!!)
- ✎ 4 Glue Sticks(Pritt – 43 g)
- ✎ 1 Bean bag
- ✎ 1 Scissor (Check if it's a left/right handed scissor)  
We recommend a Maped scissor with a help system
- ✎ Pupils must bring a sandwich and/or fruit daily. (NO sweets are allowed)

**Please remember to mark all the above items.**

(Except the paper plates and cardboard)

# GRAAD R

## Benodigdhede vir Graad R:

- Geboortesertifikaat en Kliniekkaart.
- Tassie met mates van om en by 22 cm x 30 cm. ('n A4 boek moet met gemak kan inpas)
- Bring daaglik 'n toebroodjie en/of vrug. (GEEN lekkers word toegelaat nie.)
  - 1 Groot bal
- 2 Pakke MonAmi “uitdraai-kryte”. Merk asseblief elke kryt individueel. Geen “space case” nie, asseblief. Hou die sakkie waarin kryte gekoop word.
  - Potloodsakkie om skêr, potlode en Pritt in te sit
- 1 Goeie skêr (Maak seker of dit 'n links/regs-handige skêrtjie is)
  - 5 Grys Staedtler HB potlode
    - 1 Stoelsakkie.
    - 1 Springtou.
    - 1 Boontjiesakkie.
  - 2 Groot buisies Pritt (40 gram elk).
- 10 Lêersakkies. (Moet asb. nie individueel merk nie)
- 200 Wit A4 Butterfly Kartonne – 160 gram (Moet asb. nie individueel merk nie)
  - 3 Plastiek A4 koeverte
- 20 Wit papierborde (Moet asb. nie individueel merk nie)
  - 36 stuk Legkaart (Merk elke stukkie individueel)
    - 1 A4 Witbordjie
    - 1 Witbord – uitveer
  - 4 Swart Maxiflo witbordmerkpenne

**NB: Merk asseblief al u kind se besittings**  
(BEHALWE die lêersakkies, papierborde en kartonne)



# GRADE R

## Requirements for Grade R:

- Copy of Birth certificate and Clinic card.
- A school bag, measuring approximately 22cm x 30cm (An A4 book must be able to fit in easily)
  - Pupils should bring a sandwich and/or fruit, daily. (NO sweets are allowed)
    - 1 Large ball.
- 2 Packets of Mon Ami “Twisting crayons” **Please mark each crayon individually.** Please keep the crayons in the original packaging – NO SPACE CASES PLEASE!!!!
- 1 Pencil case to keep your scissor, pencils and Pritt in.
- 1 Good quality pair of scissors. (Check if it’s a left/right handed scissor)
  - 5 Grey Staedtler HB Pencils.
    - 1 Chair bag.
    - 1 Skipping rope.
    - 1 Bean bag.
  - 2 Large Pritt (40g each).
- 200 white A4 Butterfly cardboard – 160 gram (Please don’t mark individually)
- 10 Plastic Sleeves for files. \*The sleeves, not the file!\* (Please don’t mark individually)
- A 36 piece puzzle (Mark the box and each puzzle piece individually)
  - 3 Plastic A4 Envelopes. (Document wallet)
- 20 White Paper plates (Please don’t mark individually)
  - 1 A4 Whiteboard
  - 1 Whiteboard eraser
- 4 Black Maxiflo Whiteboard markers

**Please remember to mark all the above items**

(Except the plastic sleeves, paper plates and cardboard)

**Activities at Vaalpark Primary**

**Gr. RR and R(Not compulsory)**

<b><u>Aktiwiteite wat aangebied word:</u></b>		<b><u>Kontakpersoon:</u></b>	<b><u>Telefoonnommer:</u></b>
1.	Playball	Martie	082 867 5400
2.	Rugby Skills and Development	Henriette	084 717 2020
3.	Active English and Maths	Antoinette	082 714 1155
4.	Spaanse danse	Carli	082 325 2815
5.	Experi-Buddies	Michelle	071 290 4829
6.	WJ Mini Tennis Academy	Christelle	072 213 5056
7.	Beaux-Arts kids kraftz - Pottery	Marie-Louise	082 494 6608
8.	Mini Cricket	Janneman	082 345 8347
9.	Wouter Tennis	Wouter	082 325 2344
10.	Mini Hokkie	Odette	073 230 0616
11.	Boogie Beatz	Elrine	082 332 4387
12.	Monkeynastix	Janké	063 690 3222
13.	Musiek	Elizna	084 240 5178

## Sport, Culture and Academics

<u>Activities</u>	<u>Person responsible</u>	<u>Days</u>
<u>Gr RR &amp; R Academies and Curriculum</u>	<b>Maniela Venter</b>	Contact Ms Venter after school hours if you have any concerns
<u>Gr R Athletics</u>	<b>Odette Odendaal</b>	Practice during school hours
<p><u>Grade R Winter Sport Day</u></p> <p>Netball, Rugby and Hockey</p> <p>Grade R learners get the opportunity to participate in netball, hockey and rugby!</p>	<b>Odette Odendaal</b>	<p>Netball - Practice during school hours.</p> <p>Rugby - Practice will take place <b>after</b> school hours, on a Monday, Tuesday and Thursday.</p>
<p><u>Cheerleaders - Grade R</u></p> <p>Vaalpark Primary's Gr. R girls are all part of the Cheerleader team. They get the chance to show their skills during the Grade R Athletics and Winter Sports Day</p>	<b>Monique Nortier</b>	Practice during school hours
<p><u>Eisteddfod</u></p> <p>Our little ones take part in the Poetry section</p>	<b>Maniela Venter</b>	Practice during school hours.



# KULTUUR/CULTURE

## Kunswedstryd

Leerders neem elke 2de deel aan die Vaaloewerse Kunswedstryd deel. Dit behels afdelings soos Voordrag, Spreekkoor, Letterkunde, Kuns, Kore en Vokaal.

## Redenaars en Debat

Kontakpersoon: Marie-Louise Hauptfleisch (0832256085)

Vaalpark Primary's Gr.R girls are all part of the Cheerleader team. They get the chance to show their skills during the Grade R Athletics.

## VCSV

Vaalpark Primêr het elke Vrydagoggend om 7:00 "Worship" in die saal.

Kontakpersoon: Charmaine Kriek (083 785 2585)

## "Mammas wat omgee" gebedsgroep

Die gebedsgroep kom elke Vrydagoggend om 07:30 tot 9:00 by die skool bymekaar om gebedsversoeke van kinders en personeel te hanteer. Indien die Here dit op jou, as mamma, se hart lê om betrokke te raak, is jy welkom om in te skakel.

## "Moms who care" prayer group

The prayer group meets every Friday morning at 07:30 to 9:00, at the school to deal with prayer requests from children and staff. If the Lord puts it on your heart, as a mom, to get involved, you are welcome to join.

Kontakpersoon/ Contact person:

Charmaine Kriek

083 785 2585



## NASKOOLSENTRUMS/AFTERCARE

Naskoolsentrums	Kontak nommer	Inligting
<b>Cloete Naskool Sentrum</b> Annetjie	082 828 1862	<ul style="list-style-type: none"> <li>• Vanaf na skool tot 17:15</li> <li>• Vervoer leerders</li> <li>• Oop gedurende vakansietye</li> </ul>
<b>Doeke tot Boeke Nasorg</b> Natasha	072 988 9453	<ul style="list-style-type: none"> <li>• Vanaf na skool tot 17:00</li> <li>• Vervoer leerders</li> <li>• Vakansieprogram</li> </ul>
<b>Shalom Kids</b>	072 802 5782	<ul style="list-style-type: none"> <li>• Aftercare Gr RR - Gr 7</li> <li>• From after school, until 18:00</li> <li>• Fetch learners from school</li> <li>• Holiday programme</li> <li>• Day visitors are welcome</li> </ul>
<b>Vaalpark Naskool</b> Marna	074 210 9463	<ul style="list-style-type: none"> <li>• Vanaf na skool tot 17:30</li> <li>• Vergesel leerders</li> <li>• Oop gedurende vakansietye</li> </ul>
<b>Playtime</b>	084 205 5542	<ul style="list-style-type: none"> <li>• From after school, until 17:30</li> <li>• Fetch learners from school</li> <li>• Open school holidays</li> </ul>
<b>Vaalpark leersentrum</b>	067 400 9174	<ul style="list-style-type: none"> <li>• Vanaf na skool tot 17:15</li> <li>• Vergesel leerders</li> <li>• Oop gedurende vakansietye</li> </ul>
<b>Stimmu Kids Liezel</b>	0832865585	<ul style="list-style-type: none"> <li>• From after school, until 17:30</li> <li>• Fetch learners from school</li> <li>• Open school holidays</li> </ul>
<b>Greenstone Academy</b>	061 504 3485	<ul style="list-style-type: none"> <li>• Aftercare Gr RR - Gr 7</li> <li>• From after school, until 18:00</li> <li>• Fetch learners from school</li> <li>• Holiday programme</li> <li>• Day visitors are welcome</li> </ul>
<b>Ingenio Kids</b>	072 530 1479	<ul style="list-style-type: none"> <li>• Aftercare Gr RR - Gr 7</li> <li>• From after school, until 18:00</li> <li>• Fetch learners from school</li> <li>• Holiday programme</li> </ul>
<b>Spruite Naskool en Leersentrum</b> Jolande Chamberlain	082 332 4448/ 082 345 0190	<ul style="list-style-type: none"> <li>• Leerders vanaf Gr RR - 7</li> <li>• Vanaf na skool tot 17:30</li> <li>• Vrydae tot 16:00</li> <li>• Vergesel leerders</li> <li>• Laai leerders op by skool en vat hul naskool toe, asook vervoer van huise na skole en anders om. Geleë in Sasolburg</li> <li>• Oop gedurende vakansietye</li> </ul>
<b>J's Aqua</b>	060 926 5263	<ul style="list-style-type: none"> <li>• Aftercare Gr RR - Gr 7</li> <li>• From after school, until 18:00</li> <li>• Fetch learners from school</li> <li>• Holiday programme</li> </ul>
<b>Kidspace</b>	079 978 9794	

## Dear Parent

Help raise funds for our school without costing you a cent!! The new Dis-Chem programme, MySchool MyVillage MyPlanet Fundraising programme, and the Makro Rebate programme will make it possible. The best part: It doesn't cost you, as a supporter, a cent to make a difference.

### How does the Programme work?

Funds are raised, for our school, on a monthly basis. Simply register on-line for these programmes. When you support the shops that are registered, they will donate a percentage of you spending, to your school, on your behalf. There is no cost to you!

### What are the benefits of being a part of these programmes?

Raise funds for your school without costing you a cent.  
Schools can use the money as they wish.

### How do I get started?

**Register online.** Remember that our school 's name is the beneficiary.

**Already have a card?** Change or add a beneficiary/school – you don't need a new card.

### EVERY SWIPE COUNTS – JOIN TODAY!

#### 1. My School (Woolworths, Builders, Engen, Netstar and many more)

**Apply** online at [www.myschool.co.za](http://www.myschool.co.za) or via phone at 0860 100 445. Remember that our school's name is the beneficiary.

**Already have a card?** Change or add a beneficiary/school – you don't need a new card. Simply contact MySchool at [www.myschool.co.za](http://www.myschool.co.za) or 0860 100 445

#### 2. Dis-Chem

1. Join School-Days® online [www.schooldays.co.za](http://www schooldays.co.za) and/or download the School-Days app: [www.edu.co.za/app](http://www.edu.co.za/app)
2. Select our school as your beneficiary
3. Start supporting
4. Track your contributions and transactions.

\*More info:\*

[www.schooldays.co.za](http://www.schooldays.co.za)

#### 3. Makro

Each parent simply needs to download the Makro mCard app on their mobile phones, and then, in an instant, sign up to the **m=Educ8** programme. Once they sign up, parents are ready to earn rewards for their school, while also earning all their usual mRewards.  
For every R1000 spent by the parents, the educational institution will earn R5 (earnings applicable from R1). E.g. in a school with say, 1 500 pupils, and a parent spends R1 000 per month (assuming only one of the parents spends, per family), the school can earn a very healthy R90 000 per annum.  
Ts and Cs apply.

Please support these programmes. This can make our fund-raising projects so much easier.

Geagte Ouer

Help om fondse vir ons skool in te samel sonder dat dit u 'n sent kos, met die nuwe Dis-Chem-program, MySchool MyVillage MyPlanet-fondsinsamelingsprogram en die Makro-kortingsprogram. Die beste deel: Dit kos jou as ondersteuner nie 'n sent om 'n verskil te maak nie

Hoe werk die program?

Daar word maandeliks fondse vir ons skool ingesamel. Registreer eenvoudig vir hierdie programme aanlyn. As u die geregistreerde winkels ondersteun, sal hulle 'n persentasie van u uitgawes namens u aan die skool skenk. Daar is geen koste vir u nie!

Wat is die voordele van deelname aan hierdie programme?

1. Samel fondse in vir u skool sonder dat u 'n sent kos
2. Skole kan die geld op enige manier gebruik

Hoe kan ek begin?

1. Registreer aanlyn. Onthou dat ons skoolnaam die begunstigde is.

SLUIT VANDAG AAN!

### 1. **My School** (Woolworths, Builders, Engen, Netstar en vele meer)

1. Doen aanlyn aansoek by [www.myschool.co.za](http://www.myschool.co.za) of per telefoon by 0860 100 445. Onthou dat ons skoolnaam die begunstigde is.
2. Het u al 'n kaart? Verander of voeg 'n begunstigde / skool by - u het nie 'n nuwe kaart nodig nie. Kontak MySchool by [www.myschool.co.za](http://www.myschool.co.za) of 0860 100 445

### 2. **Dis-Chem**

Hoe om aan te sluit:

1. Sluit aan by School-Days® aanlyn [www.schooldays.co.za](http://www.schooldays.co.za) en / of laai die School-Days-app af: [www.edu.co.za/app](http://www.edu.co.za/app).
2. Kies ons skool as u begunstigde.
3. Begin ondersteun.
4. Volg u bydraes en transaksies.

\*Meer inligting:\*

[www.schooldays.co.za](http://www.schooldays.co.za)

### 3. **Makro**

Elke ouer moet eenvoudig die Makro mCard-app op hul selfone aflaai en dan onmiddellik aanmeld by die m = Educ8-program. Nadat hulle ingeskryf het, is ouers gereed om belonings vir hul skool te verdien, terwyl hulle ook al hul gewone belonings verdien.

Vir elke R1000 wat deur die ouers bestee word, verdien die onderwysinstelling R5 (verdiensgeld vanaf R1).

Dit beteken dat in 'n skool, met byvoorbeeld 1 500 leerlinge en 'n besteding van R1 000 per ouer per maand, (as slegs een van die ouers per gesin spandeer) die skool 'n baie gesonde R90 000 per jaar kan verdien.

Ts en C's geld.

Ondersteun asseblief hierdie programme. Dit kan die fondsinsamelingsprojekte soveel makliker maak.

Posbus/PO Box 62056  
VAALPARK  
1948



Tel (016) 971 2012/3  
Faks/Fax (016) 971 1478  
www.vaalparkprim.co.za



**Die skoolfonds vir die jaar 2024, is betaalbaar voor die 7de van elke maand, die laaste bedrag moet voor 7 November 2024 betaal wees.**

Skoolfonds per jaar, vir die eerste kind	R12 580.00
Skoolfonds per jaar, vir die tweede kind	R11 968.00
Skoolfonds per jaar, vir die derde kind	R11 115.00

Die skoolfonds vir een kind per maand, oor **11 maande** is:  
**R1145.00 vir 10 Maande vanaf Januarie tot Oktober en R1130.00 vir November 2024.**

Die skoolfonds vir twee kinders per maand, oor **11 maande**, is:  
**R2232.00 vir 10 maande vanaf Januarie tot Oktober en R2228.00 vir November 2024.**

Die skoolfonds vir drie kinders per maand oor **11 maande** is:  
**R3245.00 vir 10 maande vanaf Januarie tot Oktober en R3213.00 vir November 2024.**

**Daar is 'n 5% korting op die skoolfonds, indien die skoolfonds ten volle voor 28 Februarie 2024 betaal is.**

	1 kind 5% afslag	2 kinders 5% afslag	3 kinders 5% afslag
<b>Skoolfonds</b>	R 12 580.00	R 24 548.00	R 35 663.00
<b>5% Afslag</b>	- 629.00	- 1 227.40	- 1 783.15
<b>Totale Bedrag</b>	<b>R 11 951.00</b>	<b>R 23 320.60</b>	<b>R 33 879.85</b>

**Bankbesonderhede:**

Vaalpark Primêre skool

ABSA bank Sasolburg

Takkode: 632-005

Rekeningnommer: 520861106

Tjekrekening

**Verwysing:** Kind se naam en van of die rekeningnommer **bv. FLAA01**

**Maak asseblief seker die verwysing is korrek, geen ouers se naam of voorletters nie, die rekeningnommer wat bo-aan die rekening verskyn moet gebruik word, nie die leerder se toelatingsnommer nie. Die rekeningnommer is gewoonlik die eerste vier letters van die leerder se van met twee syfers Bv. "FLAA01"**

**Let asseblief op volgende:**

**As gevolg van veiligheidsredes word daar geen kontant meer by die skool ontvang nie.**

**Ons het kaartfasiliteite by die skool beskikbaar, andersins kan EFT's of bankinbetalings gedoen word.**

Posbus/PO Box 62056  
VAALPARK  
1948



Tel (016) 971 2012/3  
Faks/Fax (016) 971 1478  
www.vaalparkprim.co.za



**School fees for 2024 are payable before the 7<sup>th</sup> of every month. The last payment must be before 7 November 2024.**

School fees per year, for the first child	R12 580.00
School fees per year, for the second child	R11 968.00
School fees per year, for the third child	R11 115.00

**The payable amount for one Child's school fees, over 11 months:  
R1145.00 for 10 months from January until October and R1130.00 for November 2024.**

**The payable amount for two children, over 11 months:  
R2232.00 for 10 months from January until October and R2228.00 for November 2024.**

**The payable amount for three children, over 11 months:  
R3245.00 for 10 months from January until October and R3213.00 for November 2024.**

**If the school fees are fully paid before 28 February 2024 there is a 5% discount on school fees.**

	1 child's 5% discount	2 children's 5% discount	3 children's 5% discount
<b>School fees</b>	R 12 580.00	R 24 548.00	R 35 663.00
<b>5% Discount</b>	- 629.00	- 1 227.40	- 1 783.15
<b>Total Amount</b>	<b>R 11 951.00</b>	<b>R 23 320.60</b>	<b>R 33 879.85</b>

**Banking details:**

Vaalpark Primary school  
ABSA bank Sasolburg

Branch code: 632-005

Account number: 520861106

Cheque account

Reference: Child's name and surname or Account number e.g. FLAA01

**Please ensure that the reference is correct. Use your Child's name and surname or the account number appearing on the top of the statement. No parent's names or initials or learner admission number may be used. The account number are usually the first four letters of the learner's surname, followed by digits, for example: "FLAA01"**

**Please note the following: Due to safety reasons, no cash will be received at school any longer. There is a card machine at the disposal of clients for payments at school. Alternatively, payments should be made by EFT or bank deposits.**